

WESTERN TRUCK & TRAILER SALES INC.

Sales, Finance & Rentals

1885 South 900 West
Salt Lake City, UT 84104

(800) 869-4121

Parts & Service

1490 South 400 West
Salt Lake City, UT 84115



SMITHCO SX5 FIVE-AXLE SIDE DUMP

DIMENSIONS:

- 49' Length
- 102" Width
- 18" Kingpin Setting

FEATURES:

- Bolt-on Push Block
- Electric Tarp
- LED Lights

FRAME & TUB:

- 38' Length Tub - Round Bottom
- 25.5 Cubic Yard Capacity - Level Full
- 33.8 Cubic Yard Capacity - Heaped
- AR400 Steel Construction
- No Center Divider
- Trailer Mounted Electric-Over Hydraulic Valve
- Immediate Response Valve
- 5" Hydraulic Cylinders
- Front & Rear Fenders

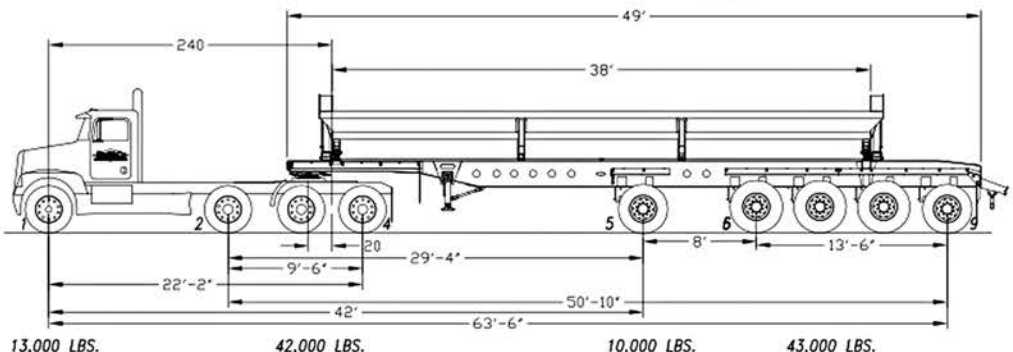
UNDERCARRIAGE:

- Neway RL250 Air Ride Suspension
- (2) Steerable Life Axles, 1st and 5th Position
- 385/65R22.5 Tires on Aluminum Wheels
- Lift Axles equipped with 11R22.5 Tires on Aluminum Wheels,
- 10" Lift Axle Travel
- Trailer Designed to Gross 108,000# with 4-Axle Tractor Weighing Approx. 19,000#

32-34 Ton Payload - 108,000# Gross



BRIDGE LAW				
BRIDGE	AXLES	DISTANCE	DOT ALLOWED WEIGHT	ACTUAL WEIGHT
1-4	4	22'	56,500	55,000
1-5	5	42'	74,000	65,000
1-9	9	64'	108,000	108,000
2-4	3	10'	43,500	42,000
2-5	4	29'	61,500	52,000
2-9	8	51'	95,000	95,000
5-9	5	22'	61,500	53,000
6-9	4	14'	51,500	43,000



WE DO WET KITS

We can set up your tractor with a wet line kit to operate your trailer, whether you need a single acting or double acting wet kit. We build our kits with name brand parts, and our trained technicians are experts at what they do.

- Bypass relief for longer pump life.
- Guaranteed to work
- Cab controls mounted either in consle or on dash.
- We can expand the scope of work to include electrical lift axle switches and tarp cab controls



You will always know that when we are on the job, your equipment will simply work.





WESTERN TRUCK & TRAILER SALES, INC.

1885 South 900 West • Salt Lake City, Utah 84104

(801) 466-8764 Office • (801) 466-9276 Fax

WET LINE, SWITCHES AND CONTROL DISCLAIMER

Please note our trailers have specialized interfaces for controlling the hydraulic, air and electrical components. WESTERN has invested considerable effort into parts, tooling and training to be able to setup your equipment to go to work without incident. For a quote on installing a wet kit for your trailer to function properly, call (801) 466-4977. Our installation will include all hydraulic hoses, valves, switches and other components for your trailer to function properly prior to delivery.

Should you decide to setup your equipment yourself or send your equipment to a 3rd party shop, please be advised:

- All components provided by the factory come equipped on the trailer. Additional valves, hoses, switches and other components can either be purchased from us or must be provided by your installer.
- The operating requirements (oil capacities, flow rates, plumbing and electrical diagrams) can be found in your new trailer manual.
- All trailers are checked out prior to delivery. The hydraulics are operated, tubs are dumped, tarps are opened and closed, axles are lifted, air bags are dumped. If you have decided to have your wet line and electrical kits installed elsewhere and there is a problem, we will be happy to take care of it for you, but you will be charged repair and diagnostic fees.
- Please do not have 3rd party shops call us asking us for additional parts or specialized knowledge. Our trained experts would be more than happy to install your wet kit for you, but are not able to train other shops in the installation process.
- Western Truck and Trailer Sales Inc. assumes no responsibility for a third party wet kit or wiring installation





LIFT-AXLE OPERATION PROCEDURE

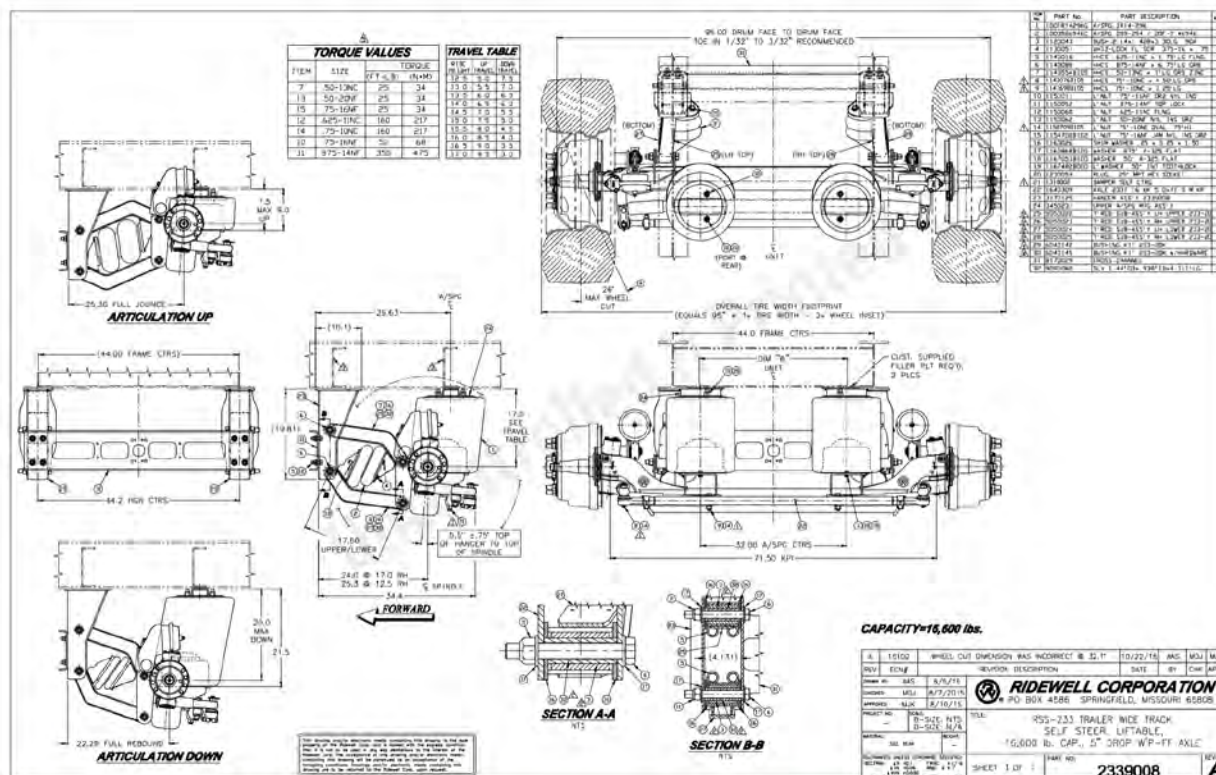


An auxiliary lift axle is designed to comply with local and federal bridge laws. The axle should be deployed whenever the trailer is loaded in both on and off road situations.

Failure to deploy the axle when loaded can result in a high centering event which will severely overload and damage the axle and suspension.

All self steer axles should be lifted when reversing, unless it's equipped with a reverse steer lock device. The axle should be lifted by the driver unless it's equipped with an auto lift in reverse system.

Just prior to dumping the load from the trailer, the steerable should be lifted to prevent over-extending the air bags.





Sales, Finance & Rentals

1885 South 900 West
Salt Lake City, UT 84104

Parts & Service

1490 South 400 West
Salt Lake City, UT 84115

(800) 869-4121



SIDE-DUMP TRAILERS

5-AXLE SIDE-DUMP TRAILERS



IMPORTANT INFORMATION

WHEN COMPARING 5-AXLE SIDE DUMP TRAILERS REMEMBER SPENDING A LITTLE MORE NOW CAN SAVE YOU LATER.

The SmithCo 5-Axle Side-Dump trailers we offer are already compliant with Utah State Law. This means:

- Both the #1 and #5 axles are steerable
- These trailers do NOT have more than three non-steer fixed axles grouped together
- All tires are the appropriate sizes to avoid axle overload

Overlooking these details can cost you in the long run.

- It can cost over \$10,000 to change a non-steer lift axle to a steer lift axle
- If stopped at port, instead forcing a correction on the non-steer axle, the port can just have you lift the axle then ticket you for being overweight EVERY TIME YOU GO THROUGH THE PORT.
- With an increase of 5-Axle trailers on the road the DOT will be look for non-compliant trailers and ticket accordingly.

The SmithCo 5-Axle Side-Dump trailer tubs are built strong.

Also keep in mind that SmithCo uses AR400 steel in their tub construction as a standard. It is a hardened and abrasive resistant steel that helps with the longevity of the tub's life. With other trailers AR400 is considered an UPGRADE, adding up to \$5,000 to the cost of these less superior trailers.

Western Truck & Trailer just wants you to get the best product at the best price.

We know how important it is to have quality equipment that meets all rules and regulation standards, and that is built to last. It can be costly to run anything less down the road. That is why we recommend SmithCo.

UTAH STATE LAW R909-2-7. VARIABLE LOAD AXLES

- (1) Vehicles with variable load axles are limited as follows:
 - (a) no more than three fixed axles shall be allowed in any group;
 - (b) retractable or variable load suspension axles installed after January 1990 shall be self steering on power units or when augmenting a tridem group on trailers;
 - (i) Non-divisible loads may be exempt from these restrictions upon written approval from the division.
 - (c) no axle in a group with a retractable or VLS axle shall exceed legal or bridge formula weight requirements, or the manufacturer's tire rating; and
 - (d) Controls for raising or lowering retractable or VLS axles may be located in the cab of the power unit. The pressure regulator valve shall be positioned outside of the cab and be inaccessible from the driver's compartment.

rules.utah.gov/publicat/code/r909/r909-002.htm