

# RANCO

by WESTERN

888-424-4004 | sales@ranco.com



## RANCO LW21-40-2 2-AXLE BOTTOM DUMP



### DIMENSIONS:

- 40' 1" Overall Length
- 102" Wide
- 436" KP to Center of Rear Axle
- 19" Kingpin Setting
- 48" Kingpin Height
- 15' 8" Upper Hopper Opening

### FEATURES:

- Rubber Bushed Oscillating Kingpin
- Bolt-On Front & Rear Fenders
- Gravity Drop Legs
- Protective Doghouse
- Forward & Rear Mud Flaps
- 2axle-sideboard

### GATES & HOPPER:

- 22 Yard Capacity plus Side Boards
- AR250 Hopper Construction\*
- Wood Side Boards\*
- Reinforcing Lower Hopper Gussets
- Bolt-On Lower Hopper Extensions
- Gate Side Seals
- AR250 Gate Face
- Heavy Duty 8" Gate Cylinders
- Dual Quick Exhaust Valves
- Gate Pin Settings

### GATE CONTROLS:

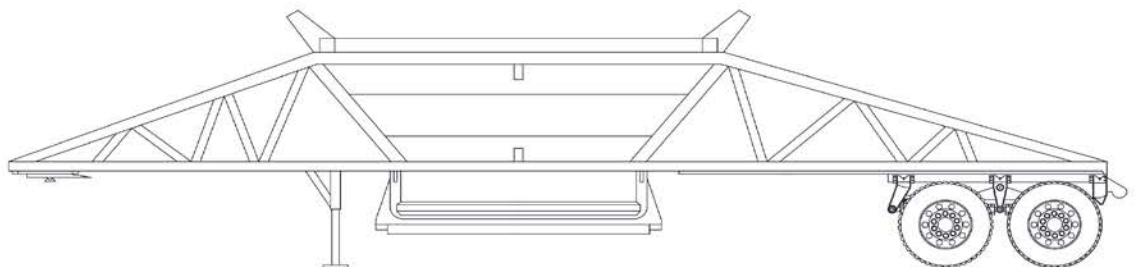
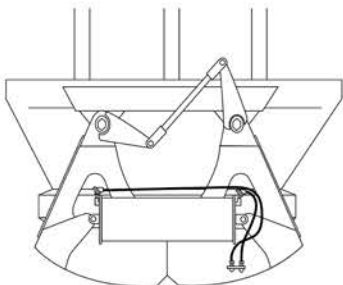
- Pilot Gate Control Valve
- Gate Valve Wired through Separate 4-Way Socket
- 60 Gallon Air Reservoir
- Air Filter & Oiler

### UNDERCARRIAGE:

- (2) 77½" Wide Trac Axles
- Hutch 9700 Spring Suspension\*
- Top Mounted Air Cans
- 16½" x 7" Air Brakes w/Auto Slack Adjusters
- Outboard Drums
- 4S2M ABS System
- Bolt-On Windrow Deflector
- 11R24.5 Tires\*
- 10-Hole Steel Wheels\*
- 2axle-gate

### ELECTRICAL:

- Wiring in Loom
- LED Lights
- Back-up Alarm
- 2axle-tires



sales@ranco.com | (888) 424-4004 | www.ranco.com