

## INDUSTRIAL LIGHT WEIGHT LIQUID TIGHT CONTAINER



### SPECIFICATIONS:

- WEIGHT: 4,460lbs (20 Cubic Yards)
- 7 Gauge Floor
- SIDES: 10 Gauge sides, bulkhead & tailgate
- FLOORS: 3x4.1# Structural Channel floor crossmembers
- Interior plastic liner hooks
- 8 5/8" OD x 7" front and rear ground rollers
- 1"EDPM hose tailgate seal
- (6"x2"x1/4) Structural tubing long sills
- LID: Side to side EPDM E-Seal
- WELDS: Continuous welded construction
- FINISH: Primed and Painted
- SIZES: 16, 18 & 20 Cubic Yards
- OPTIONS: Heavy duty long sills (6"x2"x3/8) Interior ladder | Top hinge or side hinge tailgate

# RANCO

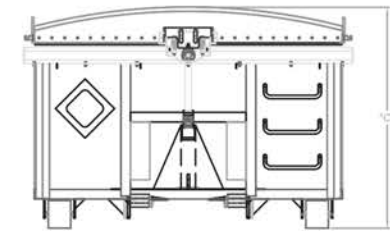
by WESTERN

888-424-4004 | sales@ranco.com

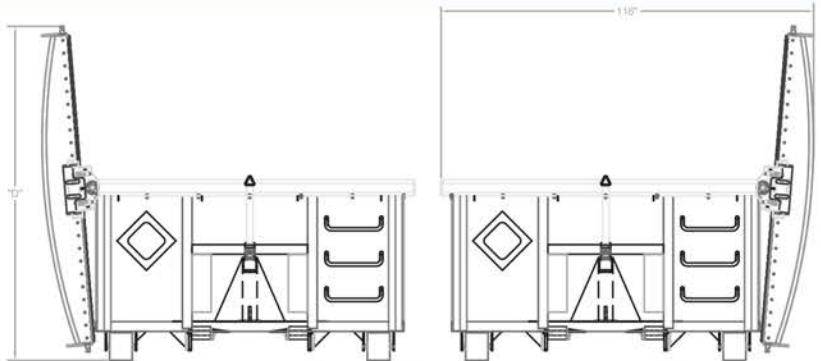
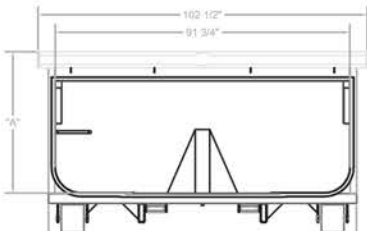


## 16 CU YD SIDE TO SIDE - PLASTIC LID

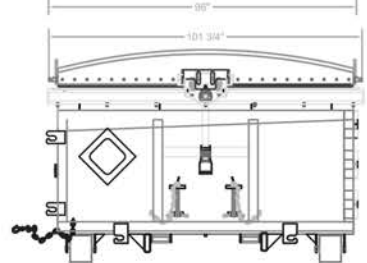
MODEL	DESCRIPTION	"A"	"B"	"C"	"D"	APX. WT.
SS1644-16	16 CU. YD.	44"	56 1/4"	68"	104"	4,210 LB.
SS1648-18	18 CU. YD.	48"	60 1/4"	72"	108"	4,335 LB.
SS1652-20	20 CU. YD.	52"	64 1/4"	76"	112"	4,460 LB.



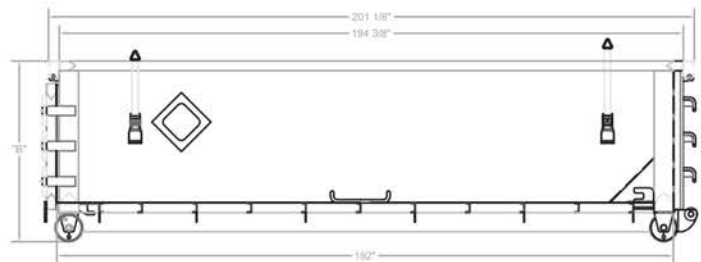
FRONT VIEW



DRIVER SIDE VIEW



REAR VIEW



PASSENGER SIDE VIEW

